

The Institute for Vocational Training of Construction Workers in the province of Bologna (I.I.P.L.E.) set up in 1947, has provided training for all professional profiles in the construction industry, in order to update, qualify and refine employees in the construction sector, as well as professionals and young people who wish to join this sector.



IIPLE is a private not-for-profit institution provided by the National Collective Labor Agreement in the construction industry and it is managed by a Board of Directors equally made up by the Association of Business and the Workers Trade Union.





I.I.P.L.E. is part of
a **national system** which has its
coordination body
in the **National FORMEDIL**, which
groups together
over 100 building schools
throughout Italy.

FORMEDIL ENTE NAZIONALE PER LA FORMAZIONE
E L'ADDESTRAMENTO PROFESSIONALE NELL'EDILIZIA



The venue of IIPLE has:

- 12 classrooms
- 1 Aula Magna (100 seats)
- laboratory for practical training (area of 1110 m.q.)
- external area about 2000 m.q.
- zen garden
- parking





EXTERNAL AREA ABOUT 2000 mq



IIPLE TARGET

I.I.P.L.E. organizes training activities for:

- workers of construction sector
- professionals of the construction industry
- security professionals
- unemployed people
- students and young people

THE MAIN AREAS OF IIPLE ACTIVITIES

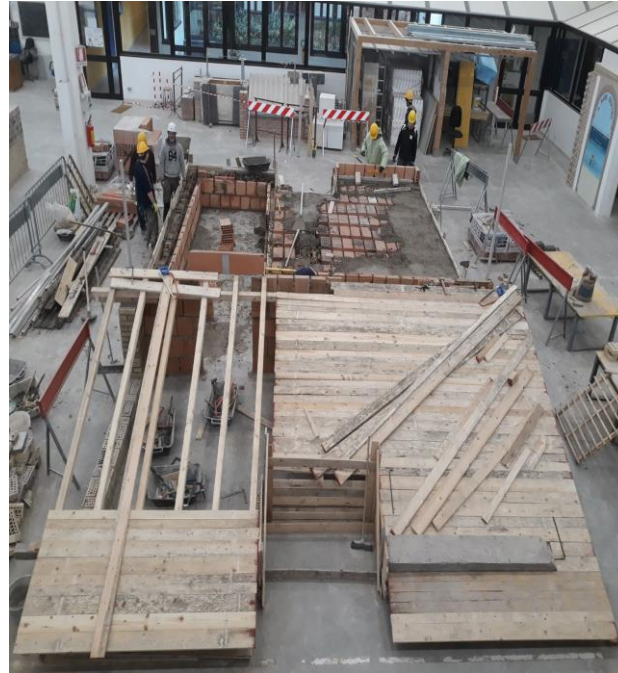
- Construction techniques
- Energy efficiency
- Machinery and equipment
- Safety at work
- Urban and land planning
- Management and quality
- ITC and BIM



CONSTRUCTION TECHNIQUES



CONSTRUCTION TECHNIQUES





TRAINING ON SAFETY



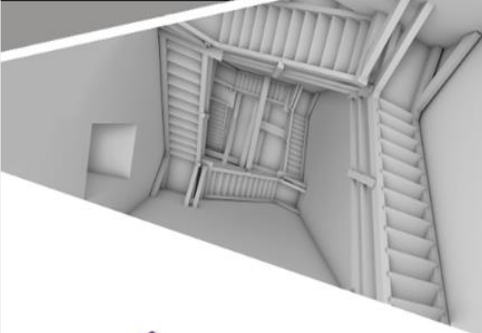
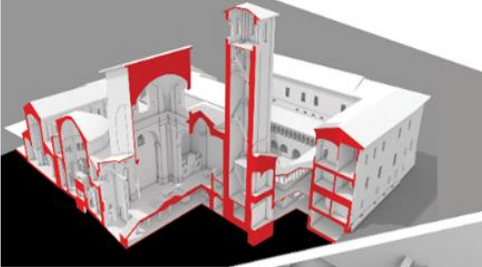


MACHINERY AND EQUIPMENT



BIM ACADEMY BOLOGNA

**BUILDING
INFORMATION
MODELING**



IIPLE established in 2014 the **Building Information Modeling Academy**, which manages training courses for BIM coordinators and BIM specialists, with the aim of spreading the use of shared 3D digital representation of buildings and infrastructures, to facilitate design, construction and planning the operation processes.

IIPLE has also created the **NZEB Academy** to provide the know-how and technical skills to designers, technicians, companies and workers to improve the energy efficiency of buildings and to combine the goal of energy saving with environmental well-being.



**RISPARMIO ENERGETICO
E SOSTENIBILITA'
IN EDILIZIA**



In pursuit of its goals I.I.P.L.E. cooperates, in agreement or in partnership, with:

- public and private institutions,
- other training organizations,
- companies,
- research centers,
- Universities and technical institutes,
- professional associations and business associations

EUROPEAN FUNDED PROJECTS

ERASMUS +

TRANSTOWORK

Work-based learning in Architecture, Engineering and Construction Industry: the transition of young people to work (ERASMUS PLUS Project n. 2017 -1IT01-KA202 -006112)



ESTEEM

European Safety Training and Evaluation supporting European Mobility (project No. 2017-1-UK01-KA202-036560)



ICARO

Innovative Qualifications for technological and organizational innovation in building sector (project No. 2018-1-ITE



HORIZON 2020

INNOVEAS

INNOVating the uptake of Energy Auditing Schemes for SMEs (project No. 847095)



TRAIN4SUSTAIN

Competence quality standard for a common understanding of sustainable energy skills



INTERREG

ADRIESEISMIC

New approaches for seismic improvement and renovation of Adriatic and Ionian historic urban centers (project No. 1019)





- ❖ More than 4200 trainees per year
- ❖ More than 250 courses per year
- ❖ More than 8600 hours of trainings per year
- ❖ Courses from 8 to 1000 hours each

